

KEYNOTES:

*All keynotes may not apply.
X-X KEYNOTE TYPE

REVISIONS

1.	
2.	
3.	
4.	
5.	
6.	
7.	
8.	
9.	
10.	

ALL IDEAS, DESIGN, ARRANGEMENTS, AND PLANS INDICATED OR REPRESENTED BY THIS DRAWING ARE OWNED BY AND PROPERTY OF THE OFFICE, AND WHERE CREATED, ENVELOPED, AND DEVELOPED FOR USE ON, AND IN CONNECTION WITH THE SPECIFIED PROJECT, NONE OF SUCH IDEAS, DESIGN, ARRANGEMENTS, AND PLANS SHALL BE USED BY, OR INCLUDED IN ANY DESIGN, DRAWING, OR CORPORATION FOR ANY PURPOSE WITHOUT WRITTEN PERMISSION OF R&Z LINARES ARCHITECTURE, INC.

FLORIDA INDOOR TENNIS
POMPAHO BEACH, FL 33069

3000 NORTH MILITARY TRAIL, SUITE 209
BOCA RATON, FLORIDA 33431
PHONE 561-391-0081 FAX 561-391-0085
EMAIL mail@rwb-arch.com

RWB
Linares
ARCHITECTURE

PROJECT # 21-035

DATE PER ISSUANCE

SHEET #

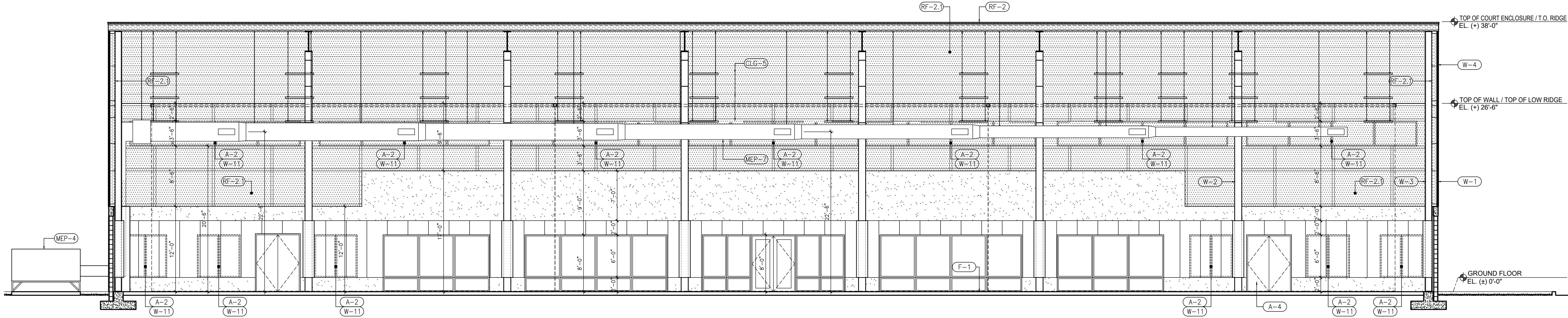
A4.00

JUAN C. LINARES

A426000640

PZ23-12000009

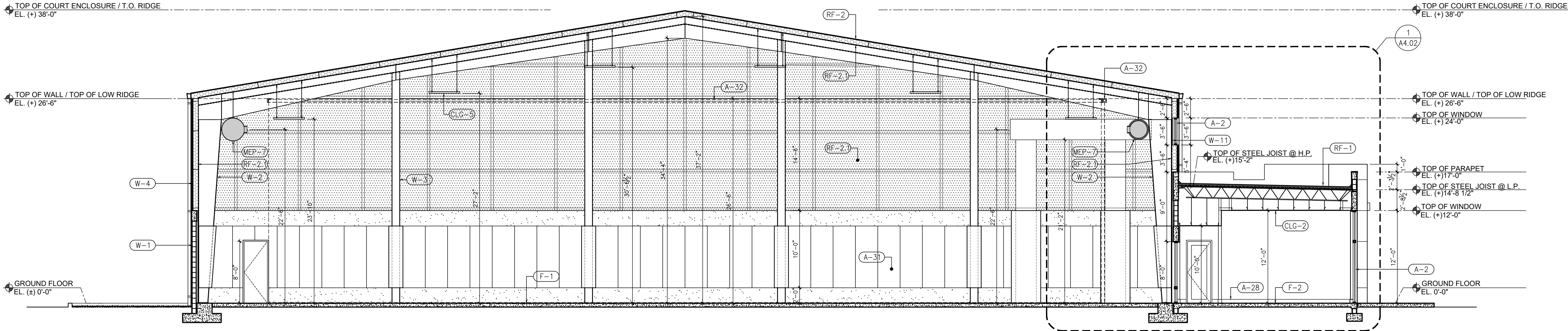
03/05/2025



BUILDING SECTION

1
A4.00

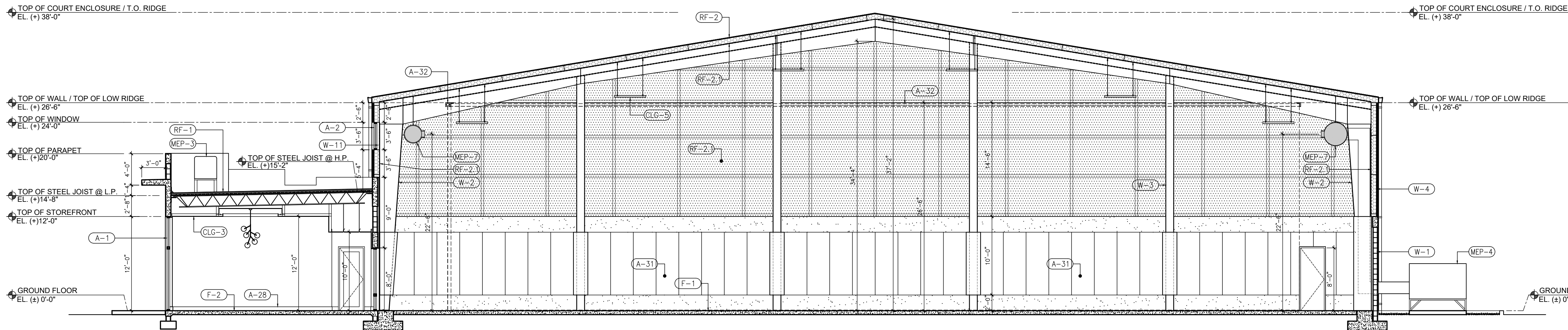
SCALE: 1/8"=1'-0"



BUILDING SECTION

2
A4.00

SCALE: 1/8"=1'-0"



BUILDING SECTION

3
A4.00

SCALE: 1/8"=1'-0"

ACCESSORIES

- A-1 EXTERIOR IMPACT RESISTANT STOREFRONT, SEE SCHEDULE
- A-2 EXTERIOR IMPACT RESISTANT WINDOW, SEE SCHEDULE
- A-3 EXTERIOR IMPACT RESISTANT STOREFRONT W/DOUBLE DOOR, SEE SCHEDULE
- A-4 EXTERIOR IMPACT DOOR, SEE SCHEDULE
- A-5 DUMPSTER ENCLOSURE, SEE SITE PLAN DETAIL 5/SP-2
- A-6 BACKFLOW PREVENTER, SEE CIVIL DWG'S FOR DETAILS
- A-7 HEAVY DUTY BIKE RACK (16 BIKES) INGROUND MOUNT POWDER COATED W/GROUT COVER
- A-8 RECEPTION FRONT DESK COUNTER WITH PULL-OUT ADA LEDGE 34" HG. SEE DETAIL
- A-9 ELECTRIC FIRE PLACE WITH 65" TV ABOVE
- A-10 42" HEIGHT BAR TABLE WITH 12" DEEP WOOD COUNTERTOP FINISH SELECTED BY ID AND 44" ALUMINUM COLUMN POST
- A-11 VENDING MACHINE BY OTHERS, SUBMIT SHOP DRAWINGS
- A-12 NEW H-L-W REFRIGERATED ADA DRINKING FOUNTAIN WITH BOTTLE FILLING STATION BY ELWAY OR SIMILAR
- A-13 LINE OF DROPPED CEILING ABOVE, SEE RCP PLANS
- A-14 LINE INDICATES HEADER ABOVE, SEE RCP PLANS
- A-15 LINE OF ROOF ABOVE
- A-16 BUILT-IN MILLWORK TOWEL BIN STORAGE/TOWEL DROP CABINET, SUBMIT SHOP DRAWINGS
- A-17 34" MAX. HEIGHT VANITY ENGINEERING STONE TOP WITH UNDERMOUNT SINK BUILT-IN MILLWORK BELOW, SEE I.D. PLANS FOR FINISHES
- A-18 ADA COMPLIANT VESSEL SINK BELOW COUNTER
- A-19 NEW MIRROR TO BE AT 40" MAX TO THE BOTTOM OF REFLECTIVE AREA, PROVIDE BACKING AS NECESSARY, SEE I.D. PLANS FOR FINISH AND SELECTIONS
- A-20 STALL COMPOSITE PARTITION, SEE FINISH SCHEDULE/I.D. PLANS
- A-21 TYPICAL ACCESSIBLE GRAB BARS COMPLYING WITH ADA FBC 2023. (WALL MOUNT GRAB BARS SEE DETAILS)
- A-22 WALL MOUNTED SHOWER HEAD
- A-23 SHOWER CONTROLS
- A-24 ADA ADJUSTABLE/DETACHABLE HAND HELD SHOWER HEAD
- A-25 ADA SHOWER CONTROLS ABOVE GRAB BAR BUT NOT EXCEED 48" A.F.F.
- A-26 ADA SHOWER SEAT
- A-27 TEMPERED GLASS DOORS AND SHOWER ENCLOSURE
- A-28 6" HG WOOD BASE, SEE DETAIL
- A-29 SCHLUTER-SCHNEE TILE TRANSITION STRIP OR SIM.
- A-30 SCHLUTER-ROCK EDGE PROTECTION FOR TILED EDGES AND OUTSIDE CORNERS OF TILED SURFACE OR SIM
- A-31 FIRM PADDING TO BE SELECTED BY OWNER, INSTALLED BY CONTRACTOR
- A-32 RETRACTABLE SUSPENDED NETTING TO BE SELECTED BY OWNER, INSTALLED BY CONTRACTOR

WALL FINISHES

- W-1 NEW 8" CONCRETE BLOCK WALL WITH 5/8" (2 COATS) CEMENTITIOUS FINISH (STUCCO). SEE WALL SCHEDULE FOR INTERIOR FINISHES.
- W-2 STEEL RIGID FRAME STRUCTURE, SEE STRUCTURAL PLANS
- W-3 STEEL COLUMN, SEE STRUCTURAL PLANS
- W-4 EXTERIOR INSULATED METAL WALL PANEL WITH FLAT EXTERIOR PROFILE AND EMBOSSED STUCCO TEXTURE THAT MIMICS THE LOOK OF A MASONRY STUCCO, SECURED IN BETWEEN INTERIOR FRAMING, SUBMIT SHOP DWGS.
- W-5 INTERIOR PARTITION WITH ACOUSTICAL INSULATION WHERE IS NOTED, NON LOAD BEARING METAL STUD INTERIOR FRAMING WITH 5/8" DRYWALL
- W-6 PROVIDED 5' HEIGHT TILE FINISH ON 1/2" CEMENT BOARD AS TILE BAKER THEN GREEN BOARD ABOVE WITH LATEX PAINT ABOVE ON GALV. STEEL STUD (25GA). DO NOT APPLY TILE BEHIND LOCKERS WHERE APPLIED
- W-7 PROVIDE CERAMIC TILE ON 1/2" CEMENT BOARD WITH SHOWER LINER ON GALV. STEEL STUD (22 GA.) (SEE DETAIL 7/A5.0 FOR WATERPROOFING)
- W-8 5/8" G.W.B. ON 1 1/2" MTL FURRING (22 GA.) AT 16" O.C. WITH R-5 RIGID INSULATION ON BLOCK, SEE WALL SCHEDULE FOR INTERIOR FINISHES.
- W-9 PROVIDE OPENING PENETRATION 24"x48" FOR R.A.G. SEE MEP'S DWGS.
- W-10 PROVIDE OPENING PENETRATION 32"x18" FOR SUPPLY AC, SEE MEP'S DWGS.
- W-11 PROVIDE REMOVABLE SPANDREL WALL PANEL BEHIND WINDOW WHERE IS NOTED. SEE ARCH. DETAIL 1A/A6.0 AND 1B/A6.0

CEILING

- CLG-1 EXPOSED STRUCTURE ABOVE TO BE PAINTED WHITE COLOR
- CLG-2 2x2 ACOUSTICAL SUSPENDED CEILING TILE
- CLG-3 1 LAYER OF 5/8" FINISH GYP BOARD ATTACHED TO STUD OR JOIST MEMBER AS REQUIRED, SEE SCHEDULE
- CLG-4 1 LAYER OF 5/8" FINISH MOISTURE GYP BOARD ATTACHED TO STUD OR JOIST MEMBER AS REQUIRED
- CLG-5 TENNIS COURT LIGHTING (SEE RCP A2.11 FOR DETAILS)
- CLG-6 ENERGY SAVER INSULATION SYSTEM

FOUNDATION / FLOOR SYSTEM

- F-1 HARD COURT SURFACE COVERED WITH ACRYLIC RESINS TO SEAL THE SURFACE AND MARK PLAYING LINES, BY OTHERS OVER 5" THICK CONCRETE SLAB ON WELL COMPACTED TERMITE TREATED SOIL, SEE SPECS
- F-2 NEW 5" THICK CONCRETE SLAB ON WELL COMPACTED TERMITE TREATED SOIL, SEE STRUCTURAL FOR DETAILS
- F-3 NEW CONCRETE SIDEWALK POURED-IN PLACE WITH CROSS SLOPE <1.50
- F-4 2" RECESSED CONCRETE SLAB
- F-5 5/8" SLAB FLOOR RECESS, VERIFY FINAL FLOOR FINISH AND PROVIDE FLUSH FINISH FLOOR FROM CLUBHOUSE TO TENNIS COURT

ROOF

- RF-1 TPO ROOFING SYSTEM ON ISO INSULATION ON METL DECK AND METAL JOISTS, SUBMIT SHOP DRAWINGS.
- RF-2 WHITE STANDING SEAM METAL ROOFING PANEL OVER STEEL RIGID FRAME STRUCTURE WITH DOUBLE LAYER UNFACED INSULATION BLANKETS OVER ENERGY SAVER FABRIC INSTALLED WITH A NETWORK OF STEEL BANDING, SUBMIT SHOP DWGS
- RF-2.1 WHITE ENERGY SAVER FABRIC INSTALLED WITH A NETWORK OF STEEL BANDING AND DOUBLE LAYER UNFACED INSULATION BLANKETS BETWEEN PURLINS
- RF-3 ROOF DRAIN, SEE MEP DWGS
- RF-4 ROOF OVERFLOW SCUPPER, SEE MEP DWGS
- RF-5 RAIN WATER LEADER, SEE MEP DWGS FOR SIZE AND CONNECTIONS
- RF-6 6"x8" ALUMINUM GUTTER, TYP.
- RF-7 ALUMINUM DOWNSPOUT

MECHANICAL / ELECTRICAL / PLUMBING

- MEP-1 ELECTRIC METER
- MEP-2 ELECTRICAL PANEL
- MEP-3 CONDENSING UNITS SEATING ON 18" HG. METAL STANDS, SEE MEP DWGS
- MEP-4 RTU UNITS SITTING ON CONCRETE SLAB WITH SCREEN GREEN VEGETATION 3' HIGH MINIMUM, SEE MEP AND LANDSCAPE DWGS
- MEP-5 FLOOR DRAIN
- MEP-6 FREE STANDING MOP SINK
- MEP-7 EXPOSED INDOOR ROUND DUCTWORK, SEE MEP'S DWGS FOR SIZE AND SPECS.
- MEP-8 WATER HEATER ABOVE, 7' MINIMUM CLEARANCE ABOVE FROM FLOOR TO PLATFORM. SEE MEP'S DWGS FOR SIZE AND SPECS.

FINISH LEGEND		FF-XX FLOOR	WF-XX WALL
		BF-XX BASE	CF-XX CEILING
FLOOR:			
CONCRETE FLOOR WITH BROOM FINISH			
OAK TILE FASHA MATTE PORCELAIN			
BONCHART CHARCOAL GREY DTS			
OIL TILE HYDROUS PONY ROAD			
MOSAICS BLACK DSH			
TENNIS COURT FINISH			
FLOOR, SEE SPECIFICATIONS			
UNFINISHED CONC.			
WALLS:			
8" LATEX WALL PAINT OC-28 SILVER SATIN PAINT			
OIL TILE 12"x12" FOL PORTUGAL 12x12			
PFFH MATTE RESTROOM WALL TILE			
OIL TILE 4x12 BATH/TOILET SHOWER			
WALL TILE SANTORINI MYRO			
TENNIS COURT EXPOSED STRUCTURE WITH ENERGY SAVER FABRIC			
ACCENT LOBBY WALL WOOD PANELS- RICHIELEU LB-37743039 DELPHI OAK			
BENJAMIN MOORE ACCENT PAINT 1B0			
BASE:			
6" WOOD BASE			
6" PORCELAIN TILE			
6" RUBBER COVE BASE			
NONE			
CEILING:			
6" WOOD CEILING TILES REGULAR			
W/8" WHITE GRID DONE BY ARMSTRONG			
PAINTED G.W.B.			
PAINTED STUCCO FINISH			
TENNIS COURT EXPOSED STRUCTURE WITH ENERGY SAVER FABRIC			
NOTES:			
- ALTERNATES ALLOWED, MUST BE SUBMITTED FOR APPROVAL BY ARCHITECT, ID, AND OWNER PRIOR TO PROCUREMENT			
- ALL FINISHES TO BE APPROVED BY OWNER PRIOR TO PROCUREMENT AND INSTALLATION			
COLORS AND TYPE TO BE DETERMINED AND SELECTED BY OWNER			
PLAN LEGEND			
NEW EXTERIOR CMU WALL			
NEW EXTERIOR WOOD FRAMED WALL			
NEW INTERIOR FRAMING			
NEW INTERIOR FRAMING TO BE SOUND INSULATED			
NEW COLUMN			
DOOR TYPE			
KEYNOTES			
WINDOW TYPE TAG			
WALL TYPE			
PORTABLE FIRE EXTINGUISHER TYPE 2A 10BC WITH CURRENT SERVICE TAGS, LARGEST SIZE-RECESSED ALUM. CABINET, OR APPROVED EQUAL			
ALT. WALL HANG I.E. NO CABINET AS LOCATIONS SELECTED BY OWNER			
NOTES:			
ALL CASEWORK / MILLWORK IDENTIFIED IS GENERAL IN SCOPE AND DESIGN. SUBCONTRACTOR IS TO PROVIDE DETAILED SHOP DRAWINGS FOR APPROVAL BY OWNER AND ARCHITECT PRIOR TO PROCUREMENT AND			
CONTRACTOR TO VERIFY ALL FINISHES AND COLORS WITH OWNER PRIOR TO PROCUREMENT AND APPLICATION			
TYPICAL DIMENSIONS ARE TYPICAL, HOLD CLEAR DIMENSIONS ONLY WHERE INDICATED			
CONTRACTOR TO VERIFY (IN FIELD) ALL EXISTING DIMENSIONS			
ANY DISCREPANCIES ARE FOUND NOTIFY ARCHITECT			
WOOD AND DIMENSIONS TO FIELD AND VERIFY DISCREPANCIES ON SITE			
CONSTRUCTION ONLY ELECTRICAL PLANS SUPERSEDES ALL OTHERS			
PROVIDE BLOCKING IN WALL AS REQUIRED			
PROVIDE A VINE TRELLIS AT ALL THRESHOLDS AND AT ADJACENT SIGNATURE			
FLALED TILE BELIEVER AT TILED THRESHOLDS. ALL CHANGES IN ELEVATION OR THRESHOLDS SHALL BE 2" OR 3" WHERE A FLALED THRESHOLD EXISTS.			